



Infoletter I.

For Exhibitors & Performers

We are delighted to have you as part of the third edition of our Cultural Connection Day.

This is our first letter to keep you informed about the progress of the event as well as the latest important information.

- **Date: Thursday, April 23, 2026**
- **Location: Gömb Aula, ELTE Lágymányosi Campus
Budapest, Pázmány Péter stny. 1/C, 1117**
- **Contact people prior to the event:**

Organisers hosting the event



Réka (ELTE EHÖK)
kulugy@ehok.elte.hu



Rita (ELTE ISAC)
isac@rk.elte.hu



Cultural Connection Day

Friendship without borders

The **Cultural Connection Day** brings together a diverse community of participants, including embassies, cultural associations, NGOs and ELTE institutional bodies.

Guests attend the event to explore exhibitions, walk around the venue, and interact with participants and members of the ELTE community. **Exhibitors** present their culture through booth displays that may include food, games, clothing, instruments, art, and other cultural elements. **Performers** contribute to the program through cultural performances such as dance, music, theatre or sports demonstrations during scheduled time slots.

As in previous years, visitors who complete their '**CCD26 Passport**' by collecting stamps from different exhibitors will be able to participate in a raffle draw at the end of the event.

This year's event will also feature a special **Speed Friending** segment, designed to help visitors connect through short, engaging conversations that encourage intercultural exchange.





Practical Information

Please fill out the **Technical Equipment Form** to indicate any equipment you may need (tables, electricity, microphones, etc.).

We also kindly ask you to bring the **flag(s)** of your country or organization, if possible, which may be displayed from the gallery of the Gömb Aula.



For **Exhibitors**:

- Arrival: until **9am** (or **30 minutes before** your booth opens)
- For the CCD26 Passport activity, please prepare a **stamp** or **stickers** for visitors' passports.

For **Performers**:

- Arrival: preferably **30 minutes before** your performance
- Technical/sound check: **9am**
- Location: on the **ground floor** of **Gömb aula**



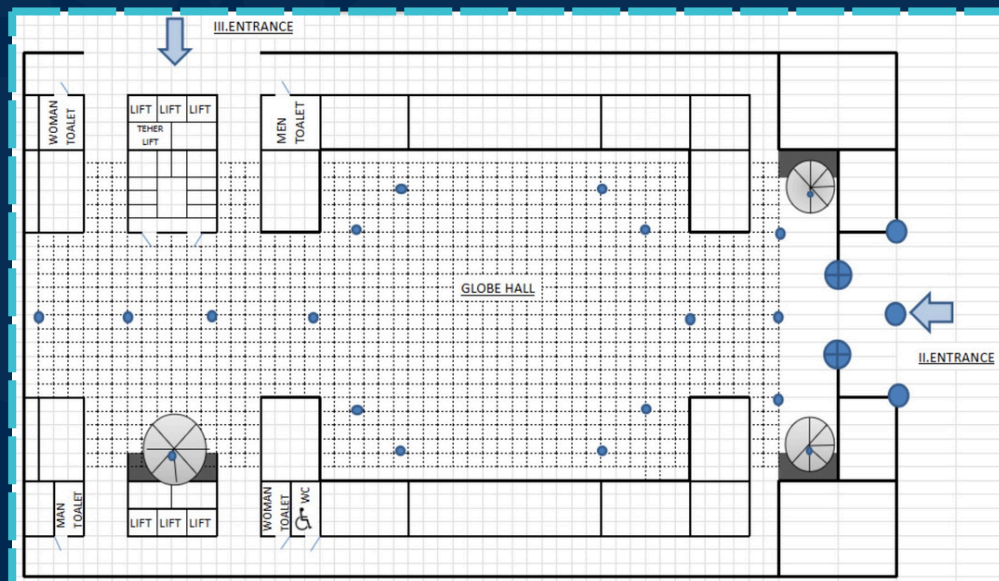
Venue

CCD 2026 will take place at the **Gömb Aula**, located at the **ELTE Lágymányosi Campus**.

To help participants prepare for the event, we will organize a **Venue Tour** where exhibitors and performers can visit the campus and explore the event space in advance.

Date: To be announced in info letter 2.

A **venue map** and **pictures** can be found below to help participants familiarise themselves with the layout.



Preliminary Program

Will be subject to changes

| | |
|---|------------------------------------|
| 8:30 to 9:00 | Exhibitors Arrival |
| 9:00 to 9:30 | Sound Check |
| 10:00 to 10:30 | Opening Ceremony |
| 13:00 About 10 minutes per performance | Performances - Section 1 |
| 13:30 About 40 minutes | Speed Friending - Round 1 |
| 14:00 About 10 minutes per performance | Performances - Section 2 |
| 14:30 About 40 minutes | Speed Friending - Round 2 |
| 15:00 About 10 minutes per performance | Performances - Section 3 |
| 16:00 | Closing ceremony + Passport Raffle |



Notes

The event is free of charge for exhibitors, performers, and visitors. However, we warmly welcome **voluntary contributions**, such as:

- small gifts for the raffle
- optional monetary donations during the event

The information in this letter is accurate at the time of sending. Updated details will be shared in the next information letter in the coming weeks.

We kindly invite all participants to follow the event on our social media platforms and help us spread the word by sharing it within their own networks. Your support in promoting the event is greatly appreciated.

Facebook event



Instagram

ELTE ISAC - @elte_isac

ELTE HÖK - @eltehok

